

# Threshold team Social Worker

## Recruitment pack



[www.gwynedd.llyw.cymru/jobs](http://www.gwynedd.llyw.cymru/jobs)

# Content

<b>Welcome</b>	<b>3</b>
<b>Overview of the county</b>	<b>4</b>
<b>Our work here at Cyngor Gwynedd</b>	<b>5</b>
The Department's Work	
Information about the job	
<b>Job description and person specification</b>	<b>8</b>
<b>Terms, conditions and benefits</b>	<b>9</b>
<b>How to apply</b>	<b>10</b>





# Welcome

Dear Applicant,

## **Working for the Children and Supporting Families department.**

Thank you for showing interest in applying for this key position.

Gwynedd is famous for its natural beauty, but the county is actually very unique and diverse and our ambition as a Council is to see our communities and people flourish.

In the same way, as a Council we are very progressive in our use of the Welsh language, and our work culture reflects that.

It is a challenging time for local government, but this position is a real opportunity for a talented individual to be part of a Council that works innovatively, for the benefit of our people in the county.

All the details of the job together with other background details can be found in the document that follows. Further details about the Council can be found on our website;

[www.gwynedd.llyw.cymru](http://www.gwynedd.llyw.cymru)





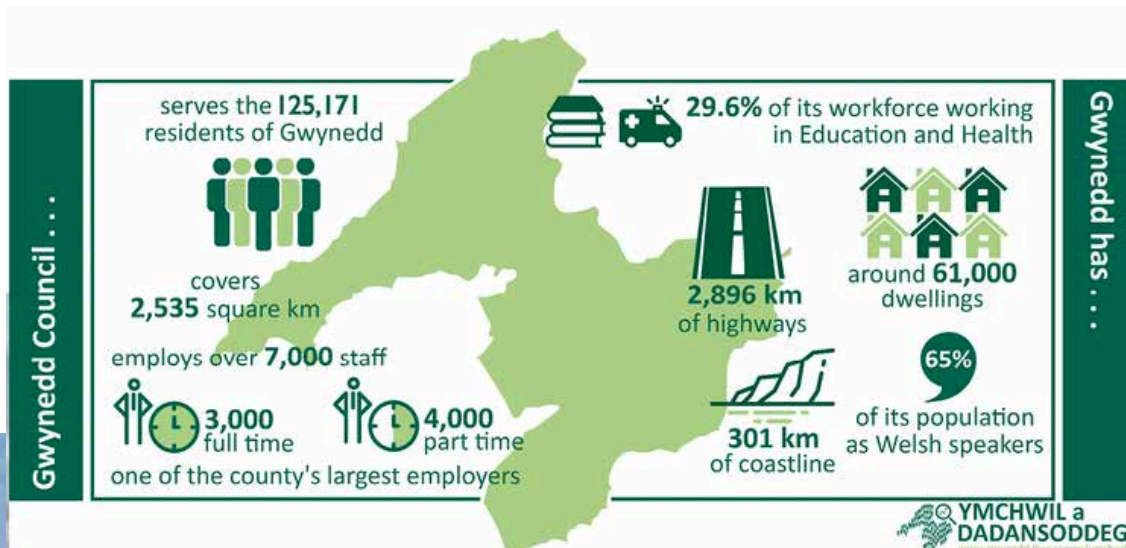
# Overview of the County

The residents of Gwynedd are amongst the happiest in Wales. It's no surprise, given that a large part of the county is within areas of exceptional beauty, including Snowdonia National Park. With a clean and relaxed environment, the coast and mountains of Gwynedd are an ideal haven to rejuvenate the soul.

Our communities are among the safest in the country, and our natural bilingualism enriches the local culture in all aspects of life. It is a great place to bring up the next generation, and the further education schools and colleges in the county offer unparalleled education and training.

**Simply put, Gwynedd is an amazing place to live.**

Here are a few facts about Gwynedd:



# Our work here at Cyngor Gwynedd

Our ambition is to see every community in Gwynedd flourish, and that we as people...

## Well-being Objectives

- **Enjoy happy, healthy and safe lives**
- **Receive education of the highest quality which will enable us to do what we want to do**
- **Earn a sufficient salary to be able to support ourselves and our families**
- **Live in quality homes within our communities**
- **Live in a natural Welsh society**
- **Live with dignity and independently for as long as possible**
- **Take advantage of the beauty of the County's natural environment**

We will do this by innovating and being at the forefront of everything we do, focusing on...

## Improvement Priorities

- Creating a viable and prosperous economy
- Every pupil having the opportunity to reach his or her potential
- Reducing inequality within the county
- Ensuring access to suitable housing
- Assisting people to live their lives through the medium of Welsh
- Assisting people who need help to live their lives as they wish
- Putting the people of Gwynedd at the centre of everything we do
- Responding to the climate change emergency

...this will be carried out during all the day to day work of the Council's Departments.

# The Department's Work

The Children and the Supporting Families department provides various social care services for residents in the county.

The Children and Supporting families department's purpose is to ensure that children and young people are protected from harm; experience stability in their lives and receive the best opportunities for their health and well-being.

There are several teams within the department who work within 3 tiers of need:

1. Early Intervention
2. Care and support, safeguarding, and care needs
3. Specialist Teams

In Gwynedd, we believe that every child and young person should be given the opportunity to reach their full potential. We recognise that children develop best when they are supported to grow and succeed within their families and communities. We also recognise that providing early intervention is critical in helping children and their families to thrive and to reduce the need for more intensive services.

Promoting well-being and supporting families to thrive goes beyond the services of our department alone, and consequently we intend to do further work across all the Council's preventative services to improve our ability to respond to the needs of Gwynedd residents, in a coordinated, integrated and efficient manner.



The successful candidate will be expected to maintain registration as a Social Worker with Social Care Wales and be able to demonstrate skills in accordance with the Job Description and Person Details (attached).

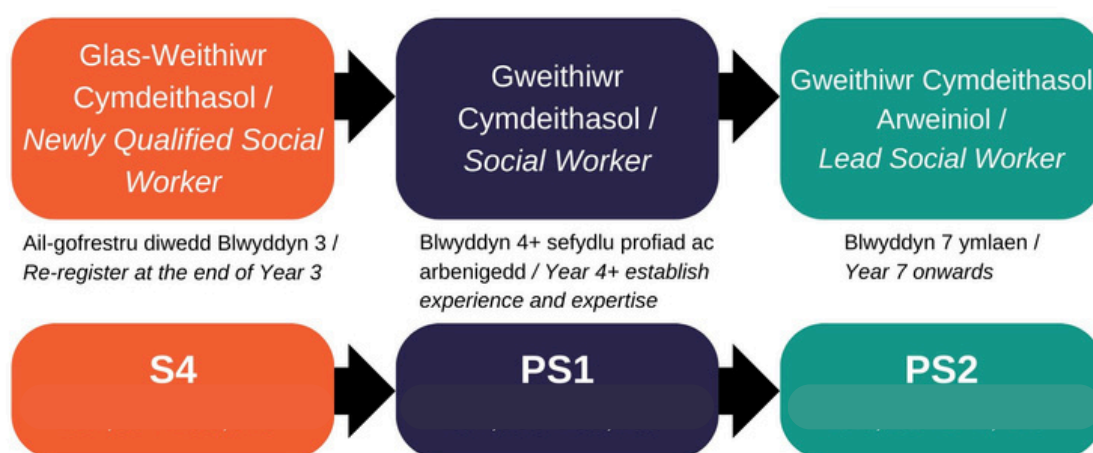
**Salary :** S4 / PS1 / PS2 (depending on experience)

**L1 (Newly Qualified Social Worker)** – S4 (pt 26-28)

**L2 (Social Worker)** – PS1 (pt 29-31)

**L3 (Lead Social Worker)** – PS2 (pt 31-33)

*A member of staff is enabled to pass salary thresholds in line with experience and performance.*



**[Follow this link for more salary information](#)**

Gwynedd Council operates in-house through the medium of Welsh and offers all its services bilingually. The candidate will need to reach the linguistic level set out in the Person specification.

We encourage all applicants for a position with the Council to submit applications in Welsh or bilingually.

*(Applications submitted just through the medium of Welsh or English will be treated completely equally, but the applicant will be asked to carefully consider the language requirements of the post and organisation and whether submitting an application in Welsh would be more suitable.)*

***If successful to be shortlisted for an interview, we will contact you via the EMAIL address provided on your application form. You need to make sure you check your EMAIL regularly.***

# Job description and Person specification.

Click the appropriate link below;

*L1 (Newly qualified Social Worker) – Qualifying date to year 4.*

[Job description](#)

[Person specification](#)

*L2 (Social Worker) – Year 4 +*

[Job description](#)

[Person specification](#)

*L3 (Lead Social Worker) – Year 7 onwards*

[Job description](#)

[Person specification](#)





# Terms, conditions and benefits of working for us

For more information about the terms and conditions and benefits of working for Cyngor Gwynedd follow the below link.

[Benefits of working for us](#)



# How to apply

Read the job description and the person specification carefully, you will need to use the information given here to successfully answer your application.

When applying online...

- Choose the Apply online option.
- Next will be the Log in/Create a new account page, if you have not already logged in.
- This will take you to My application where you will find a list of all the sections in your electronic application form each section must be filled before you can submit your application.
- A red cross means that the section has not been completed.
- The green tick means that you have filled in and saved the information in that section of your application.
- You can save your application and return at any point to make amendments / adjustments.
- Your session will end after 20 minutes of inactivity and any recent work may be lost. To avoid this, please save your work frequently. Saving your work will take you back to the My Application page.
- You can save the information to your application by clicking on Save to your application and / or save the information to your profile by clicking on Save to your profile.
- You can look at any one of your applications by visiting [My applications](#)
- [My job profile](#) includes a copy of each section in your electronic application form
- The first time you fill in an on line application the information will automatically be saved to your profile when you click the Save to application button.
- You can change the details in your job profile at any time.
- Your profile will be kept in the system so that you can use the information again when making an on line application in the future.
- You can upload information from your profile into your application by choosing the Load information from your profile option in each section.
- You can receive a weekly list of jobs via e-mail by choosing the Please send me a list of Gwynedd Council jobs via e-mail (weekly) option when registering or by [editing your user profile](#).



