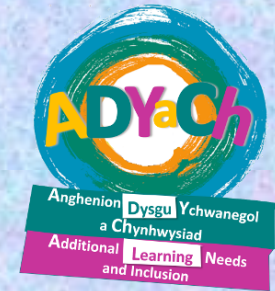


Defnyddiwch sylwadau yn lle cwestiynau i'w cynnwys yn y sgwrs.

Use comments instead of questions to include them in conversation.

Gwnewch yn siŵr bod y plentyn gyda nifer o ffyrdd i ymateb.

Make sure the child has a variety of ways to respond.



Siaradwyr amharod Reluctant speakers

Peidiwch â rhoi pwysau arnynt i siarad

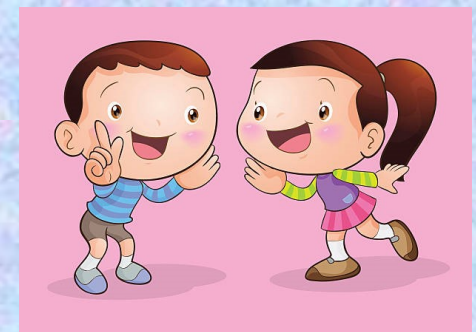
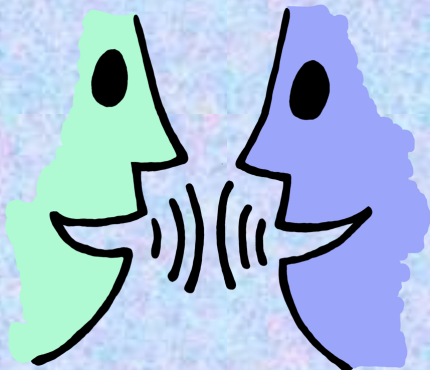
Don't put pressure on them to talk.

Ffeindiwch ffyrdd eraill y gall plentyn ymuno a'r gweithgareddau.

Find other ways the child can participate in the activities.

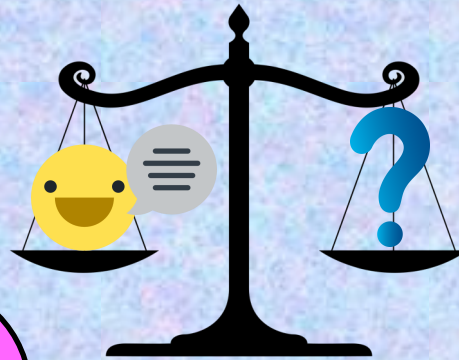
Gwnewch yn siŵr bod ffyrdd di-eiriau ar gael iddynt allu cyfathrebu.

Make sure there are non-verbal ways available for the child to communicate.



Mae angen cyd bwysedd cywir rhwng rhoi sylwadau a gofyn cwestiynau

We need to find the right balance between giving comments and asking questions



3 sylwad

Mae'r car coch yn gyflym

Mae'r car yma yn araf iawn

The green car has crashed

3 comments

1 cwestiwn

Ble mae'r car glas yn mynd?

Where is the blue car going?

1 question